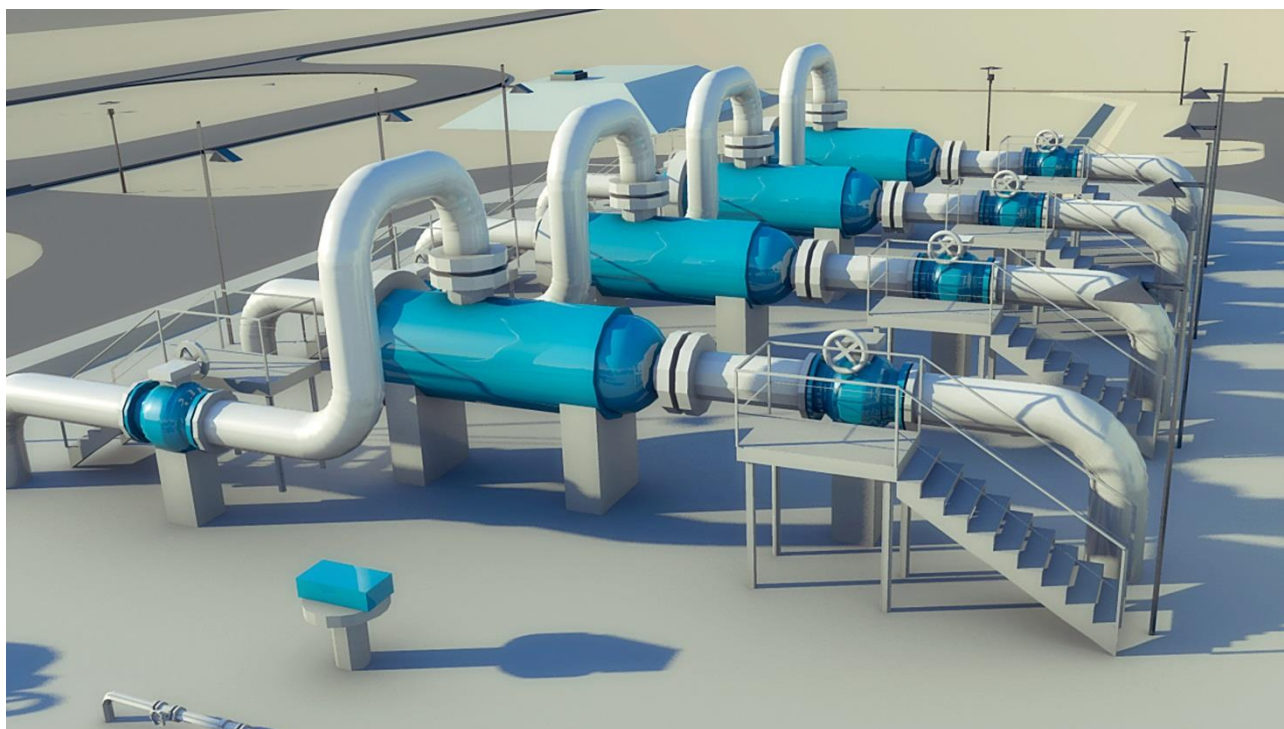




Co-financed by the European Union  
Connecting Europe Facility

## PCI 6.4 Bidirectional Austrian-Czech Interconnection (BACI) between Baumgarten (AT) – Reintal (CZ/AT) – Břeclav (CZ)





Co-financed by the European Union  
Connecting Europe Facility

## Projects of Common Interest (PCI)

EU Regulation No. 347/2013, the main purpose of which is to facilitate and accelerate the implementation of projects of strategic importance in the energy sector, introduced, among other things, a new status for projects – Project of Common Interest (PCI). The PCI status can be awarded to projects that provide a significant contribution to creating the internal energy market, ensuring the security of supply, and building strategic priority corridors with a cross-border impact. The list of PCI projects is updated every two years. The first list was approved by the European Commission in 2013, the second list was approved in 2015 and the third (currently the last) list in 2017. The current PCI list entered into effect in April 2018.

Additional information on Projects of Common Interest (PCI) is available on the European Commission's official website [here](#), and on the PCI interactive map [here](#).



## General Information

<b>Project Title:</b>	PCI 6.4 Bidirectional Austrian-Czech Interconnection (BACI) between Baumgarten (AT) – Reintal (CZ/AT) – Břeclav (CZ)
<b>Priority Corridor:</b>	North-South Gas Interconnections in Central Eastern and South Eastern Europe
<b>Countries:</b>	Czech Republic (CZ) Austria (AT)
<b>Project Submitters:</b>	NET4GAS, s.r.o. (CZ) GAS CONNECT AUSTRIA GmbH (AT)
<b>Project Location:</b>	Břeclav (CZ) – Reintal (CZ/AT border) Reintal (AT/CZ border) – Baumgarten (AT)

### Project Description:

The Bidirectional Austrian-Czech Interconnection (BACI) is a planned pipeline connection of the Austrian and Czech gas transmission networks between the compressor stations Břeclav in the Czech Republic and Baumgarten in Austria, which would directly link the gas markets of both EU Member States for the first time.

The project is intended to secure efficiently transmission capacity between the two countries and to enable further market integration fostering the liquidity of gas trading places and gas-to-gas competition on gas wholesale markets in Czech Republic and Austria for more reasonable gas prices, which can also affect neighbouring gas markets positively.

The projected length of the new high-pressure pipeline (DN 800, PN 84) in the territory of the Czech Republic is 12 km. A final investment decision has not been taken yet. The partner to the project is the Austrian transmission system operator, Gas Connect Austria GmbH.

The PCI 6.4 project was awarded PCI status as per EU Regulation No. 347/2013 in 2013. It was included also in the second PCI list by the European Commission in 2015. In November 2017, it was again awarded a PCI status in the third list, which entered into effect in April 2018. In 2012, NET4GAS received a grant for preparatory work on the project from the European Union program for trans-European Energy Networks (TEN-E) to the extent of 50% of total eligible costs. In 2014, the project was awarded a grant under the Connecting Europe Facility (CEF) program in the amount of 50% of total eligible costs for preparing background documents for the Investment Request application.

## Project Location



The pipeline is planned to be located in the Czech Republic in the territory of the South Moravian Region in the vicinity of the city of Břeclav. The pipeline would run from the Břeclav Compressor Station to the Czech-Austrian border. It is planned in a non-residential area.

Both the route of the pipeline and the placement of associated other gas assets have been planned to meet strict environmental protection requirements, as verified during an environmental impact assessment study carried out in accordance with Act No. 100/2001 Coll. NET4GAS received approval in December 2005, and the planned route of the pipeline has been discussed with the relevant authorities.



Co-financed by the European Union  
Connecting Europe Facility

## Preliminary Project Timetable

<b>Pre-project Preparation</b>	2003-2006
<b>Preparation of Execution</b>	2006-2022
<b>Construction and Execution</b>	2022-2023

The pipeline is planned to be constructed in accordance with all relevant laws, regulations and technical standards, solely on land that NET4GAS is legally authorized to use for construction purposes, where maximum care will be taken to protect the rights of the owners of such land and to guarantee their entitlement to compensation for any damage that might be caused by the construction of the pipeline.



Co-financed by the European Union  
Connecting Europe Facility

## Additional Information

### Information on Project on NET4GAS Website:

<https://www.net4gas.cz/en/projects/austrian-czech-interconnection/>

### Ten-Year Network Development Plan for Czech Republic:

<https://www.net4gas.cz/en/projects/development-plans/> *(only in Czech)*

### Consultation Process:

<https://www.net4gas.cz/en/projects/austrian-czech-interconnection/>

### Official European Commission PCI Website:

<https://ec.europa.eu/energy/en/topics/infrastructure/projects-common-interest>

### Interactive Map for PCI Projects:

[http://ec.europa.eu/energy/infrastructure/transparency\\_platform/map-viewer/](http://ec.europa.eu/energy/infrastructure/transparency_platform/map-viewer/)

### Website of Ministry of Industry and Trade:

<http://www.mpo.cz/dokument149687.html> *(only in Czech)*

### Website of Ministry for Regional Development:

<http://portal.uur.cz/pdf/Prezentace-TEN-E-05062014.pdf> *(only in Czech)*

### NET4GAS Contact Information:

E-mail: [pci@net4gas.cz](mailto:pci@net4gas.cz)

© NET4GAS, s.r.o., 2018

NET4GAS, s.r.o.  
Na Hřebenech II 1718/8  
140 21 Prague 4 – Nusle  
Czech Republic  
Website: [www.net4gas.cz](http://www.net4gas.cz)

NET4GAS, s.r.o. is the holder of an exclusive licence as the Gas Transmission System Operator (TSO) in the Czech Republic. It provides sufficient transmission capacities to satisfy both domestic and foreign demand and guarantees the safety and reliability of transmission services. It transports around 45 billion m<sup>3</sup> of natural gas per year (of which around 15 % is for domestic consumption). NET4GAS operates more than 3,800 km of pipelines, three border transfer stations, four compressor stations, and nearly a hundred transfer stations at the interface with the domestic gas distribution. The company is a member of the Czech Gas Association, the international organisations ENTSOG, GIE, EASEE-gas, and IGU and Marcogaz working groups. It has more than 500 employees.