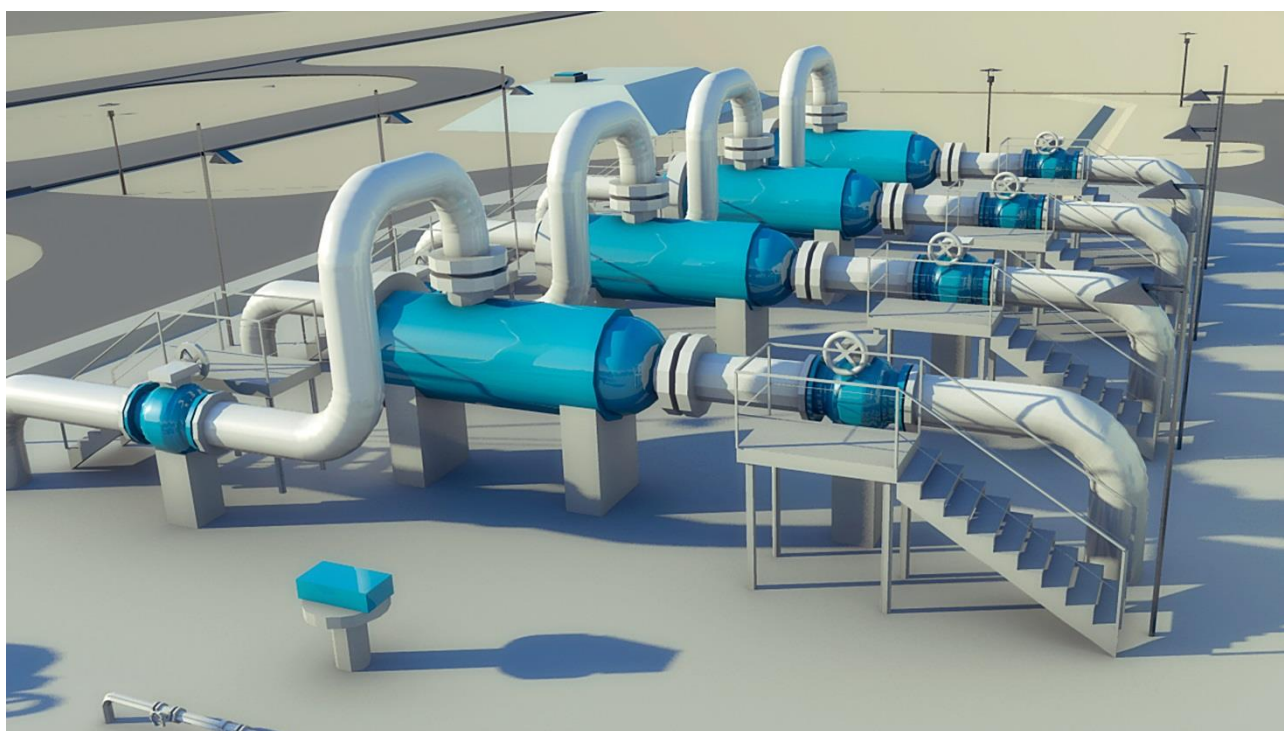




Co-financed by the European Union
Connecting Europe Facility

CZECH-POLISH GAS INTERCONNECTOR

**Sub-project PCI No. 6.1.1 Poland – Czech Republic
Interconnector [Currently known as "Stork II"] between
Libhošť – Hať (CZ/PL) – Kędzierzyn (PL)**





Projects of Common Interest (PCI)

EU Regulation No. 347/2013, the main purpose of which is to facilitate and accelerate the implementation of projects of strategic importance in the energy sector, introduced, among other things, a new status for projects – Project of Common Interest (PCI). The PCI status can be awarded to projects that provide a significant contribution to creating the internal energy market, ensuring the security of supply, and building strategic priority corridors with a cross-border impact. The list of PCI projects is updated every two years. The first list was approved in 2013. It was updated in 2015 and the updated version of the PCI list entered into effect in February 2016.

Additional information on Projects of Common Interest (PCI) is available on the European Commission's official website [here](#), and on the PCI interactive map [here](#).



General Information

Sub-project Title:	PCI No. 6.1.1 Poland – Czech Republic Interconnector [currently known as "Stork II"] between Libhošť – Hať (CZ/PL) – Kędzierzyn (PL)
Priority Corridor:	North-South Interconnections in Central Eastern and South Eastern Europe
Countries:	Czech Republic (CZ) Poland (PL)
Project Submitters:	NET4GAS, s.r.o. (CZ) GAZ-SYSTEM S.A. (PL)
Project Location:	Libhošť (CZ) – Kędzierzyn (PL)

Project Description:

The planned Czech-Polish Gas Interconnector (CPI) project consists of the construction of a pipeline (DN 1000, PN 73.5) that would interconnect the existing transmission systems of the Czech Republic and Poland.

The aim of the new bidirectional Czech-Polish pipeline project is to increase the transmission capacity and to facilitate safe and reliable transmission of gas between the two countries. The construction of such transport corridor would not only strengthen the flexibility of natural gas transport in Central and Eastern Europe, but also integrate gas markets in the region.

Another important aspect of the Czech-Polish Interconnector would be reinforcing the security of natural gas supply to Moravian regions by boosting the exit capacity into the domestic zone and also increasing injectability and deliverability at underground gas storage facilities located in Central and Northern Moravia. In addition, the project is planned to be a major contribution to efforts to secure an environmentally sound source of energy for industrial production in the South Moravian, Moravian-Silesian, Olomouc and Zlín Regions.

A final investment decision has not been taken yet. The Polish partner to the project is GAZ-SYSTEM, S.A.

The PCI 6.1.1 was awarded the PCI status as per EU Regulation No. 347/2013 in 2013. It was included in the second PCI list by the European Commission in 2015 as part of an update of the list that entered into effect in February 2016. In 2014, the project received a grant under the CEF program (Connecting Europe Facility) in the amount of 50% of eligible costs of the preparatory stage. In July 2015, a grant of 20% of eligible costs for the construction was approved for disbursement under the same program, together with the part of the project in Poland.

Project Location



The pipeline is planned to be located in the Czech Republic in the territory of the Moravian-Silesian Region between the cadastral districts of the municipalities of Libhošť and Hať. To a certain extent, the planned pipeline route follows the route of an existing DN 700 pipeline, which constitutes a part of the NET4GAS transmission system, therefore the existing safety corridor would not be significantly affected. Furthermore, it is planned to follow the route of a DN 500 distribution pipeline. The pipeline is planned in a non-residential area.

Both the route of the pipeline and the placement of other associated gas assets have been planned to meet strict environmental protection requirements, as demonstrated by the favorable outcome of an environmental impact assessment study carried out in accordance with Act No. 100/2001 Coll., where NET4GAS received approval in February 2012. Equally, the route has been designed to facilitate the connection of the new pipeline to the existing gas network and discussed with the relevant authorities.



Preliminary Project Timetable

Pre-project Preparation	2009 – 2012
Preparation of Execution	2012 – 2018
Construction and Execution	2019 – 2020

The pipeline is planned to be constructed in accordance with all relevant laws, regulations and technical standards, solely on land that NET4GAS is legally authorized to use for construction purposes, where maximum care will be taken to protect the rights of the owners of such land and to guarantee their entitlement to compensation for any damage that might be caused by the construction of the pipeline.



Co-financed by the European Union
Connecting Europe Facility

Additional Information

Information on Project on NET4GAS Website:

<http://www.net4gas.cz/en/1629/>

Ten-Year Network Development Plan for Czech Republic:

<http://www.net4gas.cz/cs/rozvojeve-plany/> (only in Czech)

Official European Commission PCI Website:

<https://ec.europa.eu/energy/en/topics/infrastructure/projects-common-interest>

Consultation Process:

<http://www.net4gas.cz/en/1629/>

Interactive Map for PCI Projects:

http://ec.europa.eu/energy/infrastructure/transparency_platform/map-viewer/

Website of Ministry of Industry and Trade:

<http://www.mpo.cz/dokument149687.html> (only in Czech)

Website of Ministry for Regional Development:

<http://portal.uur.cz/pdf/Prezentace-TEN-E-05062014.pdf> (only in Czech)

NET4GAS Contact Information:

E-mail: pci@net4gas.cz

© NET4GAS, s.r.o., 2016

NET4GAS, s.r.o.
Na Hřebenech II 1718/8
140 21 Prague 4 – Nusle
Czech Republic
Website: www.net4gas.cz

NET4GAS, s.r.o. is the holder of an exclusive licence as the Gas Transmission System Operator (TSO) in the Czech Republic. It provides sufficient transmission capacities to satisfy both domestic and foreign demand and guarantees the safety and reliability of transmission services. It transports around 45 billion m³ of natural gas per year (of which around 15 % is for domestic consumption). NET4GAS operates more than 3,800 km of pipelines, three border transfer stations, four compressor stations, and nearly a hundred transfer stations at the interface with the domestic gas distribution. The company is a member of the Czech Gas Association, the international organisations ENTSOG, GIE, EASEE-gas, and IGU and Marcogaz working groups. It has more than 500 employees.