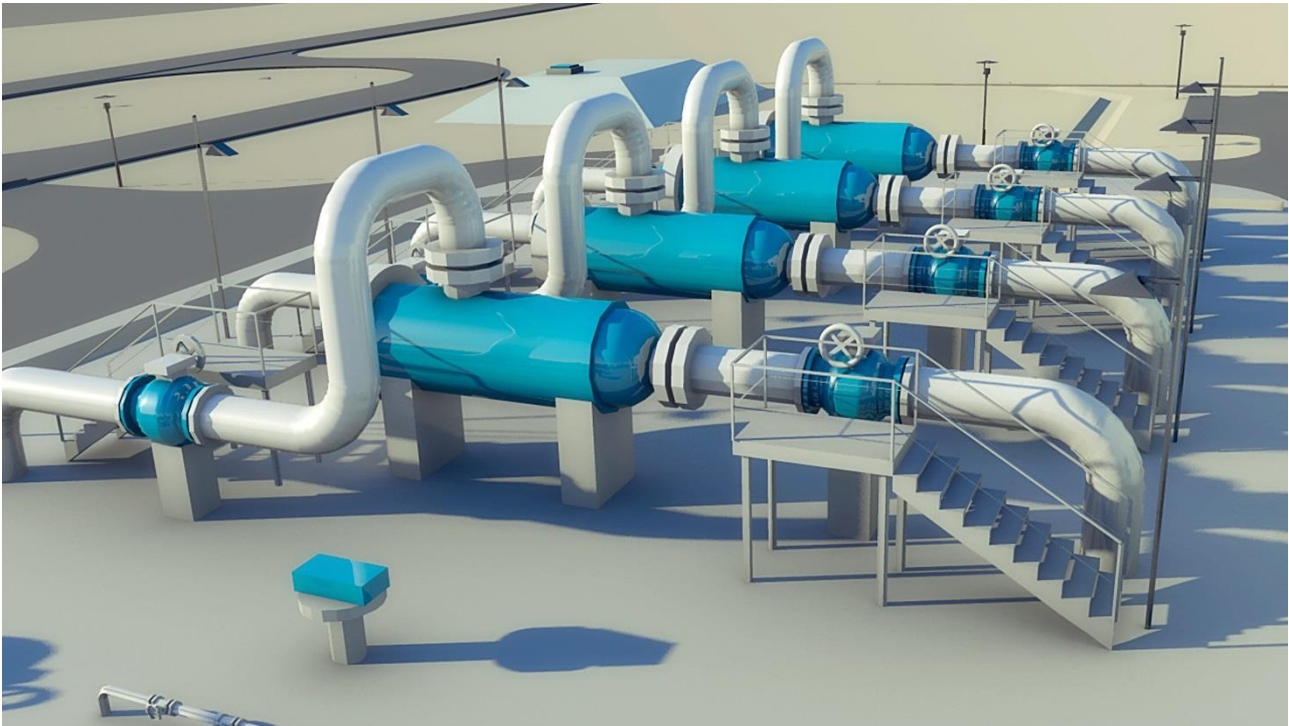




CZECH-POLISH GAS INTERCONNECTOR

**Sub-project PCI No. 6.1.12 Tvrdonice – Libhošť Pipeline,
including upgrade of CS Břeclav (CZ)**





Projects of Common Interest (PCI)

EU Regulation No. 347/2013, the main purpose of which is to facilitate and accelerate the implementation of projects of strategic importance in the energy sector, introduced, among other things, a new status for projects – Project of Common Interest (PCI). The PCI status can be awarded to projects that provide a significant contribution to creating the internal energy market, ensuring the security of supply, and building strategic priority corridors with a cross-border impact. The list of PCI projects is updated every two years. The first list was approved in 2013. It was updated in 2015 and the updated version of the PCI list entered into effect in February 2016.

Additional information on Projects of Common Interest (PCI) is available on the European Commission's official website [here](#), and on the PCI interactive map [here](#).



General Information

Sub-project Title:	PCI No. 6.1.12 Tvrdonice – Libhošť Pipeline, including upgrade of CS Břeclav (CZ)
Priority Corridor:	North-South Gas Interconnections in Central Eastern and South Eastern Europe
Country:	Czech Republic (CZ)
Project Submitter:	NET4GAS, s.r.o.
Project Location:	Tvrdonice (CZ) – Libhošť (CZ); Břeclav

Project Description:

The planned Czech-Polish Gas Interconnector (CPI) project consists of the construction of a pipeline (DN 1000, PN 73.5) that would interconnect the existing transmission systems of the Czech Republic and Poland.

The aim of the new bidirectional Czech-Polish pipeline project is to increase the transmission capacity and to facilitate safe and reliable transmission of gas between the two countries. The construction of such transport corridor would not only strengthen the flexibility of natural gas transport in Central and Eastern Europe, but also integrate gas markets in the region.

Another important aspect of the Czech-Polish Interconnector would be reinforcing the security of natural gas supply to Moravian regions by boosting the exit capacity into the domestic zone and also increasing injectability and deliverability at underground gas storage facilities located in Central and Northern Moravia. In addition, the project is planned to be a major contribution to efforts to secure an environmentally sound source of energy for industrial production in the South Moravian, Moravian-Silesian, Olomouc and Zlín Regions.

A final investment decision has not been taken yet.

The PCI 6.1.12 was included in the second PCI list by the European Commission in 2015 as part of an update of the list, which entered into effect in February 2016. A part of the cost of the project documentation is co-financed under the European Union program for trans-European Energy Networks (TEN-E) to the extent of 46% of eligible costs.

Project Location



The Tvrdonice-Libhošť pipeline is planned to be located in the Czech Republic in the territory of the South Moravian, Moravian-Silesian, Olomouc and Zlín Regions. The planned pipeline route mostly follows the route of the existing DN 700 pipeline, which is a part of the NET4GAS transmission system, therefore the existing safety corridor would not be significantly affected. It is planned in a non-residential area. An upgrade of the Břeclav compression station, which is a part of the project, is planned to be executed within the existing complex of the facility.

Both the route of the pipeline and the placement of other associated gas assets have been planned to meet strict environmental protection requirements, as demonstrated by the favorable outcome of an environmental impact assessment study carried out in accordance with Act No. 100/2001 Coll., where NET4GAS received approval in February 2012. Equally, the route has been designed to facilitate the connection of the new pipeline to the existing gas network and discussed with the relevant authorities.



Preliminary Project Timetable

Pre-project Preparation	2009 – 2012
Preparation of Execution	2012 – 2017
Construction and Execution	2018 – 2019

The pipeline is planned to be constructed in accordance with all relevant laws, regulations and technical standards, solely on land that NET4GAS is legally authorized to use for construction purposes, where maximum care will be taken to protect the rights of the owners of such land and to guarantee their entitlement to compensation for any damage that might be caused during the construction of the pipeline.



Additional Information

Information on Project on NET4GAS Website:

<http://www.net4gas.cz/en/1629/>

Ten-Year Network Development Plan for Czech Republic:

<http://www.net4gas.cz/cs/rozvoje-plany/> (only in Czech)

Official European Commission PCI Website:

<https://ec.europa.eu/energy/en/topics/infrastructure/projects-common-interest>

Consultation Process:

<http://www.net4gas.cz/en/1629/>

Interactive Map for PCI Projects:

http://ec.europa.eu/energy/infrastructure/transparency_platform/map-viewer/

Website of Ministry of Industry and Trade:

<http://www.mpo.cz/dokument149687.html> (only in Czech)

Website of Ministry for Regional Development:

<http://portal.uur.cz/pdf/Prezentace-TEN-E-05062014.pdf> (only in Czech)

NET4GAS Contact Information:

E-mail: pci@net4gas.cz

© NET4GAS, s.r.o., 2016

NET4GAS, s.r.o.
Na Hřebenech II 1718/8
140 21 Prague 4 – Nusle
Czech Republic
Website: www.net4gas.cz

NET4GAS, s.r.o. is the holder of an exclusive licence as the Gas Transmission System Operator (TSO) in the Czech Republic. It provides sufficient transmission capacities to satisfy both domestic and foreign demand and guarantees the safety and reliability of transmission services. It transports around 45 billion m³ of natural gas per year (of which around 15 % is for domestic consumption). NET4GAS operates more than 3,800 km of pipelines, three border transfer stations, four compressor stations, and nearly a hundred transfer stations at the interface with the domestic gas distribution. The company is a member of the Czech Gas Association, the international organisations ENTSO, GIE, EASEE-gas, and IGU and Marcogaz working groups. It has more than 500 employees.